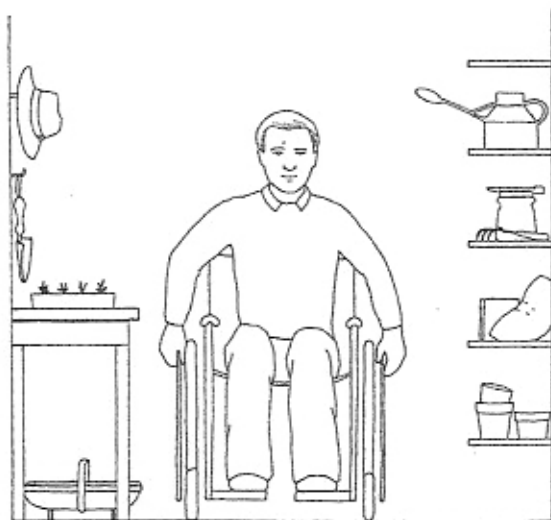


MEASUREMENTS FOR BARRIER-FREE DESIGN

Wheelchair dimensions

- Length 42"
- Open width 25"
- Collapsed width 11"
- Seat to floor 19½"
- Armrest to floor 29"
- Wheel Chair Access
- Minimum turning space, 360° 60"
- Minimum turning space, 180° 36"
- Side reach limit, high 54"
- Side reach limit, low 9"
- Safest ramp slope 1:12
- Table height 30"-33"



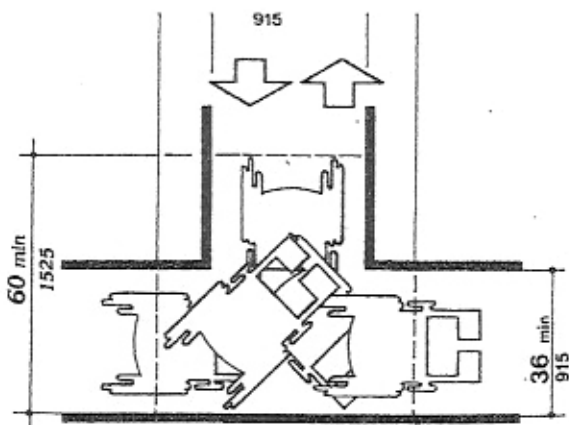
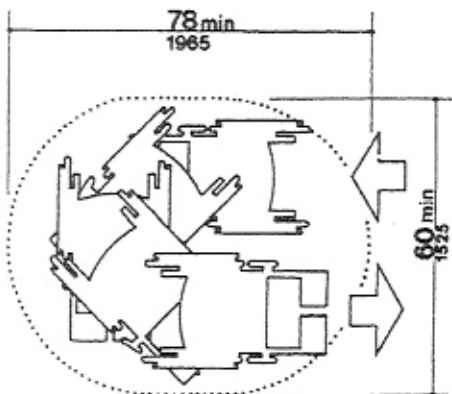
▲ Tool shed designed for easy access from a wheelchair.

Entry Doors

- Minimum clear opening 36"

Stairs

- Maximum riser height 7"
- Handrail height 32"



◀ ▲ Requirements for turning spaces for wheelchairs.